

THE INTERNATIONAL BILINGUAL SCHOOL, BAILLARGUES

DOCUMENTATION 2021 - 2022

SUMMARY

Location	P. 2
The School (EPBI)	P. 3
Particularities	P. 4
Curricula	P. 5
Prepared Examinations	P. 14
School Activities	P. 17
School trips and study trips abroad	P. 20
School Fees	P. 21
Options	P. 23
Timetables, Parent-School Communication Tools	P. 24
Canteen, Kids' Club, Study Time, School Calendar	P. 25
How to enroll and payment	P. 26
School Year Equivalence	P. 28
Canteen Service	P. 29
Cleebi, Noteebi, G Suite Education	P. 30

Location



The International Bilingual School is located in 120 hectares of parkland, in the Massane Golf Club, Baillargues. This town of 7000 inhabitants is situated just 10 minutes away from Montpellier on the A9 motorway.



How to get to the school

By road

Motorway A9 – Exit n°28 Vendargues – Baillargues.
At the Philippe LAMOUR roundabout, follow directions to “Golf de Montpellier-Massane”.
The school is approximately 15 minutes by car from Montpellier city centre.

By train

The new modernised railway station in Baillargues allows passengers to travel to the Saint Roch train station in the centre of Montpellier in just 8 minutes.

The school is situation just 300 metres from the station.

By aeroplane

The nearest airport is: Montpellier Méditerranée.

The school is just 15 minutes by car.



ECOLE PRIVEE BILINGUE INTERNATIONALE
Domaine de Massane. 34670. BAILLARGUES
Tél. : (33) 467 707 844 Fax: (33) 467 707 846 Mail: info@epbi.net Site : www.epbi.net
RC B389043423

The School (EPBI)



Established in 1988, under French National Education contract*, the school welcomes many different nationalities, from Kindergarten, to primary and secondary school through to sixth form education within the framework of the French National Education Ministry.

EPBI offers 2 curricula :

- an INTERNATIONAL curriculum
- a NATIONAL curriculum

Our active pedagogy and educational approaches to learning allow each student to develop their creativity, independence of mind and responsibility as future citizens of the world, at a very early age.

International awareness is promoted by open-mindedness and having a broad outlook on the world.

EPBI welcomes pupils of all different profiles:

- French pupils whose parents are keen to offer their children a bilingual education,
- French pupils returning from short or long-term periods abroad (2–5 years),
- Pupils of different nationalities (British, American, Australian, Spanish, Russian, Chinese ...),
- Pupils who have already studied at another European school, a lycée français, or an international school.

EPBI School Director

Dorothee LEBAILLIF

Administrative Director

Jean-Marc LEBAILLIF

Head of Kindergarten and Primary School

Séverine MENEU

Head of Secondary and Sixth Form Schools

Stéphane MAZEL

Head of the Language Department

Helen THIRTLE – LEOTARD

International Baccalaureate Coordinator

Alexandra DAVID



() for CM1-CM2 classe*

Particularities

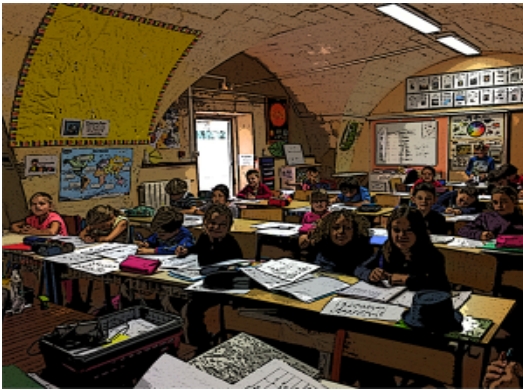
Our philosophy

EPBI is an institution of **high standards** and **ambition** offering every pupil the path to success. Learners are at the heart of our philosophy.

Our attachment to bilingualism, and more generally to multilingualism, supports the opportunity for an education that is open to the world.

Teaching based on academic learning which enhances cognitive skills is important. However, these skills alone are not enough for an international education. Therefore affective and metacognitive skills are actively developed to foster creative and critical thinking.

Academic skills as well as thinking, communication, social and research skills, are all equally important.



Teaching focuses on understanding concepts, supported by research and teamwork in local and global contexts.

Our values:

- Creative and critical thinking,
- Rigour and surpassing oneself,
- Respect and tolerance.

The school's objectives

- To favour personality development and to enhance the real potential within every pupil by encouraging creative thinking, critical reasoning and open-mindedness to other cultures and learning.
- To give all pupils excellent skills in at least 2 languages (French and English) in order to build intercultural relationships, whatever the nationality.
- To promote a level of knowledge, skills and understanding to be able to study anywhere in the world.
- To develop a sense of self-respect and respect for others allowing our pupils to become healthy and responsible citizens of the world.



The strengths of the school

- French-English bilingualism.
- Educational organisation.
- Reduced numbers of pupils in class.
- School study trips abroad.
- Safe and spacious environment of the school.
- International open-mindedness:
 - Welcoming foreign pupils and non-French speakers in Kindergarten, Primary and Secondary school: the organisation of our teaching and relatively small size of the school enables us to welcome and integrate all our students and to follow each child personally throughout their schooling.
 - Welcoming all French speakers, bilingual or not, in Kindergarten, Primary and Secondary school.

International pupils represent over 30 % of all our students and on top of this we need to add French families returning from abroad with bilingual children.

All these specific particularities are assets for the success of students coming to EPBI.

The curricula

INTERNATIONAL

(Primary Years Programme – *Candidate School*)

From CM 1 to CM 2: PYP 4-5



From 6^{ème} to 2^{nde}: MYP 1-2-3-4-5
(Middle Years Programme)



From 1^{ère} to Terminale: le DP IB 1 and DP IB 2
(IB Diploma Programme)

NATIONAL

From Petite Section in Kindergarten to CM2 :



The school provides French-English bilingual education.

From 6^{ème} to 3^{ème} (Secondary school), 2 sections offered:



A national bilingual section (French-English).



A European national section (French).

From 2^{nde} Générale to Terminale:



General Baccalaureate preparation, specialised options: Maths - Physics/ Chemistry - Biology and Earth Sciences – Social and Economic Sciences.

1/ International Curricula

From PYP 4 to the International Baccalaureate DP

The IB programme (International Baccalaureate) offers students aged 9 to 19 a stimulating and high quality education and an orientation towards international reality.

EPBI's objectives are to:

- Favour the development of the personality and the potential of every pupil by helping them to think in a creative way, to argue in a critical way and to be open to learning and to various cultures,
- Give excellent skills to all pupils in at least 2 languages (French and English) which will enable them to build intercultural relations with others, whatever their nationality,
- Promulgate a level of knowledge, skills and understanding allowing them to study all over the world,
- Encourage students to develop a sense of self-respect and respect for others and to allow each pupil to become a respectful and responsible citizen of the world.

IB programmes use best practices from a variety of educational settings and curricula.

IB programmes make students aware of international reality and engage them in thinking that goes beyond their immediate environment.



PYP: Primary Years Programme

The PYP curriculum is a rigorous **research-based** study programme that transforms teaching and learning practices.

The pedagogy is based on questioning and research. For children, research is linked to the development of their understanding of the world.

The PYP seeks above all to create a balance between the quest for meaning, understanding, the acquisition of essential skills and knowledge.

The Primary Programme is organized into six **transdisciplinary** themes with universal resonance.

- **Who we are?:** Research on our own nature, on our convictions and values, on our personal, physical, mental, social and spiritual health, on human relationships, and especially on our families, friends, communities and cultures, on our rights and responsibilities, about what being human means.
- **Where we are in space and time?:** Research on our position in space and time, on our personal experience, on our homes and our travels, on the discoveries, explorations and migrations of humans, on the relationships between individuals and civilizations, and on what links them. This research must be conducted from a local and global perspective.
- **How we express ourselves?:** Research on the ways in which we discover and express our ideas, our feelings, our nature, our culture, our convictions and our values; about the ways we think about our creativity as well as the ways we develop and enjoy it, on our appreciation of aesthetics.

- **How the world works?:** Research on the natural world and its laws, on the interaction between the natural world (physical and biological) and human societies, on how humans use their understanding of scientific principles, on the impact of scientific and technological progress on society and the environment.
- **How we organize ourselves?:** Research on the links between man-made systems and communities, on the structure and function of organizations, on decision-making in society, on economic activities and their effects on humanity and the environment.
- **Sharing the planet?:** Research on our rights and responsibilities as we strive to share limited resources with other people and other living organisms, on our communities and on relationships within and between them, on access to equality, on peace and conflict resolution.

Subjects in PYP:

Although the PYP adopts a transdisciplinary learning model, it is important to understand that knowledge disciplines are not the enemy to flee but rather an effective and necessary ally (Beane, 1995). The question is therefore not whether a place should be given to subject-specific knowledge, but how to integrate the knowledge into the transdisciplinary module in a convincing and authentic way. Since transdisciplinarity is inseparable from disciplinary education (Nicolescu, 2014), it is necessary for students to acquire understanding and basic skills in the disciplines to facilitate the integration of knowledge.

Six disciplines are used to facilitate the exploration of transdisciplinary themes in context:

- Languages: English and French,
- Mathematics
- Science,
- Social studies,
- Arts and,
- Personal, social and physical education.

The Exhibition:

In the final year of PYP, students take part in a graduation project: the exhibition.

This project requires each student to invest in the 5 essential elements of the programme: knowledge, concepts, know-how, interpersonal skills and action.

It is both transdisciplinary research conducted in the spirit of personal and shared responsibility, and a summative evaluation activity used to celebrate the transition of students from PYP to MYP (Middle Years Programme).

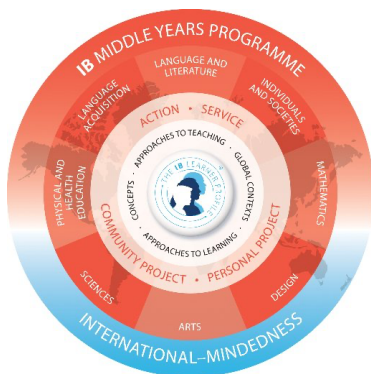
The exhibition is an important event which combines the essential elements of the PYP and shares them with the whole school community.

Evaluation:

Different evaluation strategies are implemented:

- Observation-based strategy
- Assessment of achievements
- Procedure-based strategy
- Question-answer strategy
- Open-task strategy

MYP: Middle Years Programme



In MYP, the language of instruction is English.

The MYP study programme is made up of a common core element and 8 subject groups.

There are two parts to the common core:

- Service as Action: Volunteering for charities throughout the MYP programme concentrating on the school and local community and inciting pupils to explore their rights and responsibilities.
- Personal Project: This is an individual project carried out in the final 2 years of MYP (MYP 4/ 5) encouraging pupils to reinforce their skills linked to approaches to learning.

The 8 subject groups are:

- Group 1 Language and Literature
- Group 2 Language acquisition French (4 levels)
- Group 3 Individuals and Societies
- Group 4 Sciences
- Group 5 Mathematics
- Group 6 Arts
- Group 7 Physical and Health Education
- Group 8 Numerical and Product Design (MYP 1, 2 and 3)

Different subjects are offered within each group.

The MYP pedagogical framework includes:

- Learning approaches that help students “learn to learn” by developing their skills.
- Key and related concepts that encourage students to explore great and important ideas.
- Global contexts that help them measure the relevance and importance of their studies.

Assessment within MYP:

Assessment within MYP is carried out thanks to official assessment criteria given by the IB: 4 criteria are assessed for each subject. Each criterion is assessed by a grade from 1 to 8.

These assessment criteria are used for all the MYP years (1 to 5).

In MYP 4 and 5 we also include a grade out of 100 points for official continuous assessment tests (devoirs surveillés).

ECOLE PRIVEE BILINGUE INTERNATIONALE
Domaine de Massane. 34670. BAILLARGUES

Tél. : (33) 467 707 844 Fax: (33) 467 707 846 Mail: info@epbi.net Site : www.epbi.net
RC B389043423

IB DP Study Programme (IB)

1st Year DP (IB DP) (11th grade / year 12) and 2nd Year DP (12th grade / year 13)

The IB Programme aims to educate pupils who already have an excellent general knowledge and will address the intellectual, social, emotional and physical well-being of students and determination to succeed.



The language of instruction for the IB DP is English.

Bilingual students are able to follow a subject course in subject groups 3 or 4 in another language.

The study programme is made up of **6 subject groups and the common core.**

The common core, which includes 3 elements, aims to broaden the students' learning experiences and encourage them to apply their knowledge and skills.

Theory of Knowledge (TOK), focuses on the nature of knowledge and examines how we know what we know.

The extended essay allow students to carry out personal and independent research resulting in a 4000 word written thesis.

CAS (Creativity, Action, service), where students carry out projects and action within in all three concepts.

Thanks to the common core of the Diploma Programme, students reflect on the nature of knowledge, complete an independent research task and participate in a community service task.

The 6 subject groups are:

- Group 1: Language and Literature
- Group 2: Language Acquisition
- Group 3: Individuals et Societies
- Group 4: Sciences
- Group 5: Maths
- Group 6: Arts

Different subjects are offered within each group.

Subject choice in the IB DP

Learners on the Diploma Programme choose one subject in each of the first five subject groups and **an extra subject** which can either be Arts from group 6 or another subject from groups 1 to 5. Certain subjects will be studied at **Higher level (HL)**, whereas others will be at **Standard Level (SL)**.

HL and SL courses differ in scope but are measured according to the same grade descriptors. However, students at HL are expected to demonstrate a greater body of knowledge, understanding and skills at this higher level.

Each student must take at least three (but no more than four) subjects at higher level, and the remaining at standard level. **Standard level** subjects require **150 teaching hours** whereas the **higher level** are comprised of **240 hours**.

ECOLE PRIVEE BILINGUE INTERNATIONALE

Domaine de Massane. 34670. BAILLARGUES

Tél. : (33) 467 707 844 Fax: (33) 467 707 846 Mail: info@epbi.net Site : www.epbi.net

RC B389043423

2/ National Curriculum

From Kindergarten to the French Baccalaureate



Kindergarten

TPS / PS (Petite Section) – MS (Moyenne Section) – GS (Grande Section)

Admission Conditions

Each family must have a meeting with a member of the School Board of Directors. Children from the age of 2 years and upwards are welcome in the Kindergarten.



Educational organisation

There are three year groups in Kindergarten: TPS / Petite Section for the 2 to 3 year olds, Moyenne Section for 4 year olds, Grande Section for 5 year olds. Generally speaking, Kindergarten children integrate the class which is most appropriate to the child's stage of development. In Kindergarten, French and English languages are taught very early on offering optimal learning conditions of immersed language learning giving remarkable benefits both linguistically and cognitively. Early language learning develops both listening and

speaking skill sets.

Pupils develop in a stimulating environment through interactions with other children and through play. They develop their autonomy, self-confidence and respect for themselves and others. We encourage curiosity and initiative.

The teaching team is made up of native English and French speaking teachers. Each teacher is permanently assisted by a nursery assistant. During this period, which is favorable for verbal communication, Kindergarten classes apply the simplest but most effective teaching methods.



TPS / Petite Section

The children are in total immersion in English.

The native English-speaking teacher helps them with learning and creative skills.

In the classroom, in the playground and in the canteen, they speak, listen to and sing in English.

Moyenne Section and Grande Section

Children are immersed in a different language every other day:

- in English with their native English-speaking teacher for discovery topics,
- in French for the discovery of French and Maths with their French-speaking teacher.

According to age group, psychomotricity and body movement expression sessions are organised every week.

ECOLE PRIVEE BILINGUE INTERNATIONALE

Domaine de Massane. 34670. BAILLARGUES

Tél. : (33) 467 707 844 Fax: (33) 467 707 846 Mail: info@epbi.net Site : www.epbi.net

RC B389043423

Primary School



CP (Cours Préparatoire)
CE1 (Cours Élémentaire Year 1) CE2 (Cours Élémentaire Year 2)
CM1 (Cours Moyen Year 1) – CM2 (Cours Moyen Year 2)

The primary school has a contract for CM1 and CM2 and works under the authority of the French National Education Ministry.

Admission Conditions

All families seeking places for their child(-ren) are required to have an individual meeting with one of the members of the School Board of Directors.

Previous school reports will be needed for all entries into CE1 onwards.

Educational organisation

Pupils receive a completely bilingual (French-English) education.

- **French and Maths** are taught in French.
- **English and Topics (History, Geography and Science)** are taught in English.



The teaching team is made up of native English-speaking and native French-speaking teachers.

- From CP onwards, children learn beginners' Spanish.
- Beginners' German is taught from CM1 onwards

According to the different classes and age groups, other activities such as Art, Quidditch, P.E., Self-expression and Golf are set up during the whole school year.

From **CE1 to CM2**, children who have no or very little English will benefit from compulsory booster English classes.

From **CP to CE2**, children who have no or very little French will benefit from compulsory booster French classes.

Each pupil benefits from an individualised accompaniment during all their schooling at EPBI.

Secondary School

6^{ème} - 5^{ème} - 4^{ème} - 3^{ème}

The secondary school prepares for the Brevet exam at the end of the 4th year (3^{ème}) which leads on to the French sixth form or lycée (Seconde, Première and Terminale).

Admission Conditions

Classes from 6^{ème} to 3^{ème} are accessible for all bilingual and non-bilingual pupils. All families seeking places for their child(-ren) are required to have an individual meeting with one of the members of the School Board of Directors.

Previous school reports will be needed for all entries.

Educational organisation

- limited number of pupils in class.
- directed study time after school.
- intensive communication with the family-pupil-teaching team.

Weekly continuous assessment in all subjects:

- 2 x 1 hour supervised assessment tests or DS (Devoirs surveillés) for 6^{ème} and 5^{ème}.
- 1 x 2 hour DS for 4^{ème} and 3^{ème}.
- 3 x Brevet mock exams for 3^{ème}.

2 different sections available:



The bilingual section for students who speak perfect English. Maths, French, Physics, Chemistry are taught in **French**. Biology and the Earth Sciences, History, Geography, Civil Education are taught **English**.

Languages

- Advanced English
- A 2nd foreign language (*Spanish, German, Chinese*)
- The possibility of a 3rd foreign language (*only after validation by the Head of Secondary*)
- FLE (*French as a Foreign Language*)



The European section for pupils who are not fluent in English

All subjects are taught in **French**.

English taught to reinforce notions and level.

Languages

- A 2nd foreign language (*Spanish, German, Chinese*)
- The possibility of a 3rd foreign language (*only after validation by the Head of Secondary*)
- FLE (*French as a Foreign Language*)

ECOLE PRIVEE BILINGUE INTERNATIONALE

Domaine de Massane. 34670. BAILLARGUES

Tél. : (33) 467 707 844 Fax: (33) 467 707 846 Mail: info@epbi.net Site : www.epbi.net

RC B389043423



Sixth form or lycée

2nde générale, 1^{ère} générale, Terminale générale

Admission Conditions

Sixth form classes from 2nde to Terminale are accessible for all bilingual and non-bilingual pupils. All families seeking places for their child(-ren) are required to have an individual meeting with one of the members of the School Board of Directors. Previous school reports will be needed for all entries.

Educational organisation

- limited number of pupils in class.
- directed study time after school.
- intensive communication with the family-pupil-teaching team.

All sixth form students benefit from regular and progressive exam practice:

- 3 official baccalaureate mock exams (*written and oral*).
- Regular assessments or DS (*devoirs surveillés*): 1 x 3 hour test / week in 2nde, 1 x 4 hour test / week in 1^{ère} and Terminale

The official programme

2nde Générale

French, History- Geography, Civil Education, Foreign Languages A and B, Maths, Physics, Chemistry, Biology and Earth Sciences, Sport, Social and Economic Sciences, Personalised Accompaniment.

1^{ère} Générale

Common core: Numerical Education, French, History- Geography, Foreign Languages A and B, Sport.

Speciality options (3 compulsory subjects): Maths, Physics /Chemistry, Biology and Earth Sciences, Social and Economic Sciences.

Personalised Accompaniment: Individual study help, further explanations, working independently, method acquisition and help with post-baccalaureate choices.

Terminale Générale

Common core: Numerical Education, French, History- Geography, Foreign Languages A and B, Sport.

Speciality options (2 compulsory subjects): Maths, Physics /Chemistry, Biology and Earth Sciences, Social and Economic Sciences.

Post-Bac orientation and guidance.

Options: Complementary Maths
Expert Maths

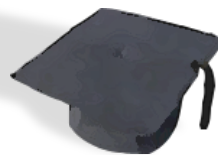
ECOLE PRIVEE BILINGUE INTERNATIONALE

Domaine de Massane. 34670. BAILLARGUES

Tél. : (33) 467 707 844 Fax: (33) 467 707 846 Mail: info@epbi.net Site : www.epbi.net

RC B389043423

Exams



Brevet des Collèges	DELTA, DALF (French as a foreign language)
French Baccalaureate	DELE (Spanish as a foreign language)
International Baccalaureate	ZD,ZMP (German as a foreign language)
Cambridge University English Assessment : KET, PET, FCE, CAE, YLE	HSK (Chinese as a foreign language)



The International BACCALAUREATE

The IB programmes are recognised and successful worldwide because:

- learners are at the heart of the education programme
- they develop efficient approaches to teaching and learning
- they integrate global contexts to nurture student open-mindedness towards different cultures and languages
- they explore significant programme content by developing disciplinary and interdisciplinary understanding to respond to rigorous international standards.

The IB programme aims to give a rigorous and balanced education. It contributes towards the intellectual, social, emotional and physical well-being of the pupils and is internationally recognised by universities. The IB DP reinforces student learning and development according to the IB Learner attributes.

The IB learner profile describes a wide range of far-reaching aptitudes and human responsibilities. These qualities involve commitment towards helping all members of the entire school community to respect themselves, each other and the whole world they live in.

Learners should be inquirers, knowledgeable, thinkers, communicators, principled, open-minded, caring, risk-takers, balanced and reflective.

IB teaching at EPBI is structured on the following education principles:

- research-based learning,
- conceptual-based learning,
- local, national and global contexts,
- team work and collaboration,
- guided by formative and summative assessment.

The International Baccalaureate opens doors to international studies.

THE FRENCH NATIONAL BACCALAUREATE



The French Baccalaureate allows access to higher education at universities in France.

During their baccalaureate preparation, pupils benefit from personalised accompaniment.

The number of students per class is reduced allowing more individualised time with the teachers.

100% pass rate for the Scientific (S) and Social and Economic Sciences (ES) Baccalaureate in 2020 and in previous years.

Included in these results are numerous merit and distinction awards for excellent students with personal profiles / statements for “prep” classes for entrance into the great “grandes écoles” in France.

The French Baccalaureate along with a Cambridge University English Assessment Test (CAE, FCE) help to create international university opportunities.

ECOLE PRIVEE BILINGUE INTERNATIONALE

Domaine de Massane. 34670. BAILLARGUES

Tél. : (33) 467 707 844 Fax: (33) 467 707 846 Mail: info@epbi.net Site : www.epbi.net

RC B389043423



DELF / DALF

The **DELF** and **DALF** (Diplôme d'Etudes en Langue Française / Diplôme Approfondi de Langue Française) or French level tests are the only official exams offered by the French National Education Ministry. They are based on the Common European Framework A1 to C2 levels.

They are valid for life and are internationally recognized allowing recognition of French language schools for studies.



DELE

DELE (*Diplôme d'Espagnol comme Langue Etrangère*) or Spanish level tests validate the linguistic skills of a non-native Spanish speaker.

These qualifications are recognised by all Spanish speaking countries and lead to both study and work opportunities around the world.



ZD, ZMP

ZD (*Zertifikat Deutsch*) or German level tests certify both speaking and written work in German. ZMP (*Zentrale Mittelstufenprüfung*), demands an excellent level of speaking, understanding and written expression in German. With this level, students don't have to sit an entrance exam upon arrival at German universities.

The ZD and ZMP are recognised worldwide and are considered to be a “passport” to enter German universities.



汉语水平考试

The Chinese Proficiency Test, (Hanyu Shuiping Kaoshi – HSK), is the only standardized test that evaluates Mandarin language skills for non-native speakers. There are 6 levels equivalent to the CEF A1- to B2+.

ECOLE PRIVEE BILINGUE INTERNATIONALE

Domaine de Massane. 34670. BAILLARGUES

Tél. : (33) 467 707 844 Fax: (33) 467 707 846 Mail: info@epbi.net Site : www.epbi.net

RC B389043423



University of Cambridge Exams
KET, PET, FCE, CAE, YLE

Cambridge university exams are well-known in France throughout the academic and professional world. They represent reliable internationally recognised levels of English proficiency.

In France, exam centres are managed by the Cambridge Examinations Officer.

The International Bilingual School
is an official exam preparation centre

Cambridge ESOL Exam Preparation Centre

Exam preparation: specific preparation is given according to the level and age of the pupils.

YLE (Young Learners English test/Starters-Movers-Flyers) for primary school children

There are 3 levels: Starters, Movers (A1*), Flyers (A2*)

Objectives are to:

- test the use of English fairly at a primary level
- give children access to their first ever international examination
- promote knowledge and efficient teaching
- encourage future language learning.

KET (Key English Test) (A2*)

This is an elementary level exam, the first level (A2) offered by Cambridge for pupils from 11 years. Exam preparation is challenging for certain students but the satisfaction of passing the exam will motivate them to continue to the next level by studying for the PET the following year.

PET (Preliminary English Test) (B1*)

This is an intermediate level exam, the second level (B1) offered by Cambridge for pupils from 11 years. This exam tests and validates the candidate's ability to communicate both in written and spoken English in everyday situations.

FCE (First Certificate in English) (B2*)

This is the third level (B2) offered by Cambridge for pupils aged 12/13 years onwards. It offers a high level linguistic qualification necessary in order to access Higher Education abroad or to work in an English-speaking country or simply to be able to communicate easily in any situation.

This level can lead on to studies or work in PR, bilingual or trilingual secretarial work, personal assistant, trade and banking, hotel and tourism, transport, travel agencies, international airlines, international correspondence, diplomatic work, interpreting and translation, IT, positions at the EU, etc. ...

CAE (Certificate in Advanced English) (C1*)

This is the fourth level (C1) offered by Cambridge for pupils aged 14/15 years onwards. It's the most well-known Cambridge exam worldwide. It's the qualification "par excellence" for anyone seeking a choice of studies or work abroad. As many of our students would like to use their in English in their future career, we strongly recommend them to reach this high advanced level before the end of their school education.

This level can lead on to studies or work in PR, bilingual or trilingual secretarial work, personal assistant, trade and banking, hotel and tourism, transport, travel agencies, international airlines, international correspondence, diplomatic work, interpreting and translation, IT, positions at the EU, etc. ...

(*) Common European Framework for Languages (CEF)

ECOLE PRIVEE BILINGUE INTERNATIONALE

Domaine de Massane. 34670. BAILLARGUES

Tél. : (33) 467 707 844 Fax: (33) 467 707 846 Mail: info@epbi.net Site :www.epbi.net

RC B389043423

Activities

Within the education framework of the school, EPBI offers many different scholastic activities on top of regular classroom lessons such as Golf, Sport and Physical education, Quidditch, Artistic expression and Art.

Sport and Physical Education in Kindergarten and Primary

Cycle 1

Sport in cycle 1 has 4 essential objectives for a child:

- Moving in space and on objects
 - Adapting movement to various situations
 - Communicating with others through activities and artistic expression
- Working together, cooperating, and defending in order to set up real strategies.



These specific physical activities suitable for 3-5 year olds contribute to the motor, sensory, emotional and intellectual development of the child. It is an opportunity to explore, to express oneself, to act in a familiar environment, then gradually do the same in a less familiar environment. Psychomotricity allows you to locate yourself in space.

Sport and Physical Education is taught by a qualified sports teacher.

Cycle 2 / Cycle 3 / Cycle 4

This programme is part of the common foundation of knowledge, skills and culture. Sport and PE programmes aim to acquire five main skills:

- develop motor skills and learn to express yourself using your body
- appropriate methods and tools, through physical and sports practice
- share rules, take on roles and responsibilities,
- learn to maintain your health through regular physical activity
- acquire physical, sporting and artistic knowledge.

Quidditch from CE1 to 5ème



Quidditch is a sport from the Harry Potter saga. The game takes place between two teams of 7 players. Quidditch allows motor development because it is a mixture of handball, basketball and rugby and also develops strategic aspects and team cohesion.

Each team is made up of a goalkeeper, two beaters, three chasers and one seeker, who each play a specific role. The goal is to score more points than the opposing team.

During a match you use the *quaffle* that you have to throw in the opponent's rings, three *bludgers* that you throw at the opponents in order to temporarily eliminate them as well as the *snitch* that ends the game when caught.

Each participant must run with their broomstick between their legs, which makes getting around even more complex!

The session takes place in the form of training exercises, simplified situations of a game and ends with matches during which the children also participate in the refereeing.

ECOLE PRIVEE BILINGUE INTERNATIONALE

Domaine de Massane. 34670. BAILLARGUES

Tél. : (33) 467 707 844 Fax: (33) 467 707 846 Mail: info@epbi.net Site :www.epbi.net

RC B389043423

Golf for CM2 – 6^{ème} – 5^{ème}

The aim of the introductory golf sessions is to make students independent on a golf course and a driving range.

We also aim to teach the rules and regulations as well as the specific vocabulary of the game so each stage of the game of golf can be differentiated.

Rules must be respected in order to learn safely and in harmony with the other learners and their environment.



This activity tries to combine rules of the game and performance:

- to develop autonomy and enjoyment for golf
- to grow technically, physically, mentally and strategically
- to be able to observe and analyse different situations in the game
- to learn to concentrate, stay attentive and manage one's emotions
- to acquire basic techniques for the routine of the game (assessing information, making a decision, practising a swing, aiming with the final shot for the hole).

There is a test at the end of each term which allows the golf instructors to assess their pupils' practical and listening skills, progress and technical skills.

Art from CP to CM2

All primary school children have one art class a week on a chosen theme.

Each class will discover a new artist every term and observe, comment and try out their own paintings, sculptures, creations "in the style of" this artist.



Individually or in groups, pupils reproduce the artwork through copying the famous artist using various materials such as paper, plastic, wood, metal or textiles.

Art classes give the opportunity to each child to express their artistic nature and creative skills, to build their confidence and to flourish by finishing a piece of artwork.

Art and body language expression from Moyenne Section to CP



Children in Moyenne and Grande Section classes of Kindergarten and the CP class have body language expression classes once a week.

During the school year, they discover a different theme every term to exploit and develop their sensory and artistic perception through dance, music, theatre, relaxation, circus activities and team games.

These workshops also allow the children to discover the world outside their classroom –sports field, park, art classroom.

Children learn self-expression skills and develop their creativity around particular themes such as colours, emotions, animals, seasons, the 5 senses, all through fun and creative learning.

ECOLE PRIVEE BILINGUE INTERNATIONALE

Domaine de Massane. 34670. BAILLARGUES

Tél. : (33) 467 707 844 Fax: (33) 467 707 846 Mail: info@epbi.net Site :www.epbi.net

RC B389043423

Spanish from CP to CM2



Spanish for beginners is offered once a week to all primary school children. Classes are age-appropriate and concentrate on vocabulary, pronunciation and listening.

Different themes are covered such as school, days of the week and months of the year, numbers, colours, animals, family, food, clothes...

From the age of 9 years, children will learn a little grammar and learn how to conjugate certain verbs, learn about Spanish civilisation and culture.

Artistic and fun activities are incorporated into the discovery of the Spanish language

German in CM1 and CM2

The discovery of the German language is offered to the older primary school children.

Firstly, children learn general knowledge about Germany, where it is situated geographically in Europe and the world, its traditions and culture.

Then the pupils go on to learn how to spell, phonetic pronunciation and numbers.

Every day vocabulary is taught: how to introduce yourself, polite expressions and idiomatic phrases.

Reading enhances vocab learning on different themes: animals, the human body, house and home, family and colours etc. ...

At the end of every lesson there is a fun activity where pupils learn through games and songs.



Educational outings



Day trips such as: concerts at the Opera House in Montpellier, Space City in Toulouse, museums, English theatre, Salins du Midi in Aigues-Mortes, Carcassonne, Mediterranean International Film in Baillargues, Dinosaur Site in Mèze, etc...

ECOLE PRIVEE BILINGUE INTERNATIONALE

Domaine de Massane. 34670. BAILLARGUES

Tél. : (33) 467 707 844 Fax: (33) 467 707 846 Mail: info@epbi.net Site : www.epbi.net

RC B389043423

Language and cultural study trips abroad

Short trips and school trips abroad are an important part of the school's philosophy.

Short trips



Sometimes short 2-3 day trips are organised with the teaching team from CM1 onwards (Barcelona visit, Cité des Sciences in Paris, Futuroscope in Poitiers, Châteaux in the Loire Valley, etc.).

Discovery trip

Every year children from Moyenne Section, Grande Section in Kindergarten and from CP take a trip for 4/5 days with their teachers.

This discovery trip is a privileged moment for pupils and teachers who create a very special set of memories together. Relationships change as the children see their friends and teachers outside the classroom.

This trip helps to discover the unknown and to do different activities such as visiting a farm, gardening, astronomy pony-riding, making bread or jam, discovering flowers and nature in the region and growing a herb garden...

This short trip gives hands-on experience and is a springboard for learning acquisition. New projects begin after the short discovery trip.



Study trips abroad



Since the beginning, EPBI has always organised an 8-10 day school trip abroad.

It's an optional school trip for children in classes from CE1 to 1ère, which is closely linked to an education theme at the school.

The pupils and teaching team discover different English-speaking countries together such as the USA, Canada, but also closer to home, Malta, England, Scotland or Ireland.

ECOLE PRIVEE BILINGUE INTERNATIONALE

Domaine de Massane. 34670. BAILLARGUES

Tél. : (33) 467 707 844 Fax: (33) 467 707 846 Mail: info@epbi.net Site : www.epbi.net

RC B389043423

SCHOOL FEES

KINDERGARTEN AND PRIMARY

Net prices (€) per school contract and per school year 2021 / 2022

Entry fee *: 2100,00 €

Admin fee *: 650,00 €

KINDERGARTEN			
Classes	Regime	Tariffs	
		Individual	Company
Très Petite Section (TPS)	External	6800	8800
Petite Section (PS)	½ board school meal	7970	9970
Moyenne Section (MS)			
Grande Section (GS)	½ board packed lunch	7350	9350
NATIONAL PRIMARY			
Classes	Regime	Tariffs	
		Individual	Company
Cours Préparatoire (CP)	External	6800	8800
CE 1 – CE 2	½ board school meal	8140	10140
CM 1 – CM 2			
	½ board packed lunch	7350	9350
INTERNATIONAL PRIMARY			
	Regime	Tariffs	
		Individual	Company
PYP 4 – 5	External	8700	11300
(Year 5 / 6 - 4th / 5th Grade)	½ board school meal	10040	12640
	½ board packed lunch	9250	11850

(* New enrolment (1st year only)

ECOLE PRIVEE BILINGUE INTERNATIONALE

Domaine de Massane. 34670. BAILLARGUES

Tél. : (33) 467 707 844 Fax: (33) 467 707 846 Mail: info@epbi.net Web: www.epbi.net

RC B389043423


SCHOOL FEES

SECONDARY

Net prices (€) per school contract and per school year 2021 / 2022

Entry fee *: **2100,00 €**

Admin fee *: **650,00 €**

NATIONAL SECONDARY			
Classes	Regime	Tariffs	
		Individual	Company
6 ^{ème} to Terminale	External	7300	9500
	½ board school meal	8750	10950
	½ board packed lunch	7850	10050
 IB PROGRAMME			
MYP			
Classes	Regime	Tariffs	
		Individual	Company
MYP 1 - 2	External	10450	13500
	½ board school meal	11900	14950
	½ board packed lunch	11000	14050
MYP 3	Externe	12700	16500
	½ board school meal	14150	17950
	½ board packed lunch	13250	17050
MYP 4 - 5	Externe	15100	19600
	½ board school meal	16550	21050
	½ board packed lunch	15650	20150
DP IB			
Classes	Regime	Tariffs	
		Individual	Company
1st Year DP IB 2nd Year DP IB	External	15100	19600
	½ board school meal	16550	21050
	½ board packed lunch	15650	20150
IB DP exam enrolment **		700	
USA university application	1 to 5 applications	1800	
	Extra application	180	
British university application		680	

(*) New enrolment (1st year only)

(**) 2nd Year DP IB

ECOLE PRIVEE BILINGUE INTERNATIONALE

Domaine de Massane. 34670. BAILLARGUES

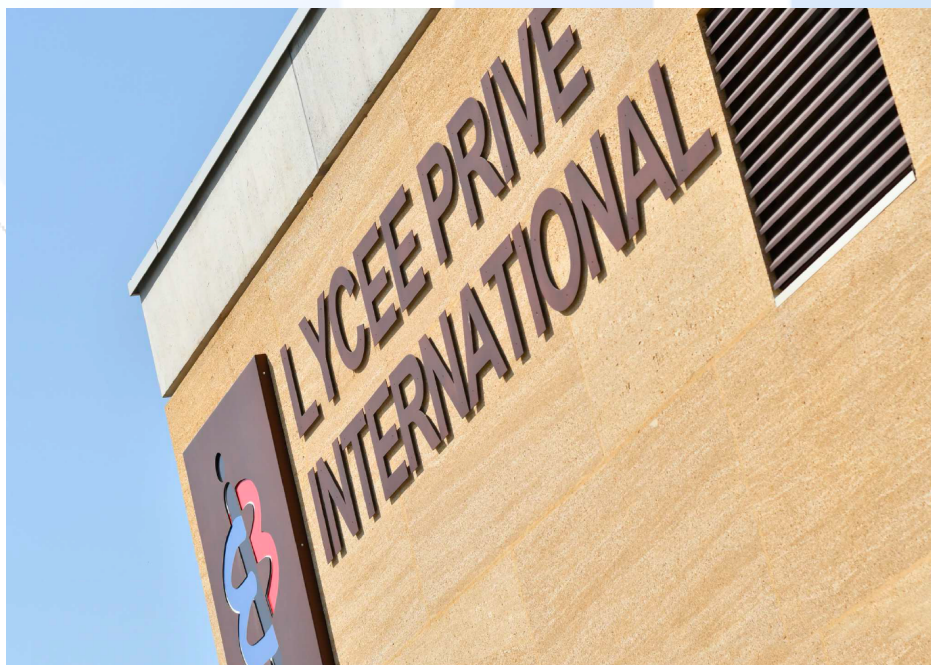
Tél. : (33) 467 707 844 Fax: (33) 467 707 846 Mail: info@epbi.net Web: www.epbi.net

RC B389043423

Options

Enrolment on various optional courses can be made between 1st and 14th September 2021.

Options	Classes	Times	Tariffs	
Directed Study Time Primary	CP to CM2, PYP4 / PYP5	Mon-Tues-Thurs Friday (kids' club) 4:45-5.30pm	1 day/week	235 €
			2days/week	450 €
Directed Study Time Secondary	6^e- 5^e- 4^e- 3^e MYP1/MYP2/MYP3/MYP4	Mon-Tues-Thurs Friday (kids' club) 4:45-6pm	3days/week	620 €
			4days/week	740 €
FLE French as a foreign language	CP-CE1-CE2	2 hours / week	645 €	
English as a foreign language	CE1-CE2-CM1-CM2			
Chinese	Primary 1 beginners group 1 pre-intermediate group	1hour / week	390 €	
Cambridge Exam preparation	CE1 to CM2 Secondary and Sixth Form			
DELE	4^{ème} to 2^{nde}			



ECOLE PRIVEE BILINGUE INTERNATIONALE

Domaine de Massane. 34670. BAILLARGUES

Tél. : (33) 467 707 844 Fax: (33) 467 707 846 Mail: info@epbi.net Web: www.epbi.net

RC B389043423

School Opening Times

The School	
Monday-Tuesday-Thursday-Friday	from 7.45am to 6pm
Wednesday	from 7.45am to 5.30pm
The Classes	
Kindergarten --> TPS-PS-MS-GS Monday-Tuesday-Thursday-Friday	From 8.45am-11.30am From 12.45pm to 4.30pm
Primary Monday-Tuesday-Thursday-Friday	From 8.45am to 4.30pm with a 1 hour lunch break
Secondary Monday-Tuesday-Thursday-Friday	From 8am to 4.30pm/6pm with a 1 hour lunch break
Secondary Wednesday	From 8am to 12.30pm From 1pm to 4.30pm

It is strictly forbidden to access the school premises during the school day unless you have the authorisation to do so via the intercom at the school gate.

Before and after official school times, all pupils are under their parents' responsibility.

Parent / school communication

Information exchange and communication between parents and the school take place electronically via the following platforms:

- reception@epbi.net Individualised correspondence between the school and parents /pupils
- www.cleebi.online School general information website
Assessment test timetables, day trips, meetings, school life,
- www.noteebi.fr Educational information (Secured access)
Grades, timetables, school reports, absences...
- G Suite Education Virtual classroom and videoconference

School canteen

There is a daily canteen service (p.29).

Kids' club/ Study time

Kindergarten:

There is a kids' club organised in Kindergarten from 4.45pm onwards.

Kids' club: It is available during school opening times, before and after class time.

Primary:

Study time: Monday, Tuesday and Thursday from 4.45pm to 5.30pm with a teacher for those children who are enrolled.

Kids' club: Friday 4.45-6pm.

Secondary:

Study time: Monday, Tuesday and Thursday from 4.45pm to 6pm with a teacher for those children who are enrolled.

Kids' club: Friday from 4.45pm to 6pm

- **Study time is reserved for those pupils who are enrolled for the whole school year.** However, if you cannot collect your child at 4.45pm due to unforeseen circumstances, all pupils will go to study time and you will be invoiced 12 €/day (invoice at the end of the month).

School calendar

First day back at school	Kindergarten and Primary	Thursday 2 nd September 2021	9am
	PYP		9am
	National Secondary & MYP		1.30pm
	National Sixth Form & DP IB	Wednesday 1 st September 2021	9am
OCTOBER HALF TERM		Last day of lessons: Back to school:	22nd October 2021 8th November 2021
CHRISTMAS		Last day of lessons: Back to school:	17 th December 2021 3 rd January 2022
FEBRUARY HALF TERM		Last day of lessons: Back to school:	18 th February 2022 7 th March 2022
EASTER		Last day of lessons: Back to school:	22nd April 2022 9th May 2022
SUMMER HOLIDAYS		Last day of the school year : 1 st July 2022	

ECOLE PRIVEE BILINGUE INTERNATIONALE

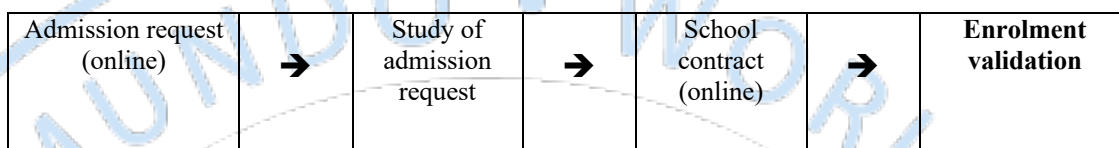
Domaine de Massane. 34670. BAILLARGUES

Tél. : (33) 467 707 844 Fax: (33) 467 707 846 Mail: info@epbi.net Web: www.epbi.net

RC B389043423

Terms of enrolment and payment

1 Admission procedure



The school contract refers to the whole school year 2021/2022. In the event of departure or arrival during the school year, enrolment will be subject to a partial school contract according to availability of places, including specific pricing terms.

2 School fee payment

For new students

Study of educational file online: **150 €**

If the financial guarantor does not respond to this online request, the study fees will not be reimbursed.

Upon a favourable answer from the admissions committee

Upon signing the financial contract:

Admission fee: **650€**

Entry fee: **2100 €**

Deposit : **25 % of annual school fees.**

For families already at the school

Deposit : **25 % of the total annual school fee** at the signing of the financial contract

The outstanding balance must be paid in accordance with the terms of enrolment.

Otherwise, the school's services are put on hold until payment.

In the event that school fees are paid by a third party (company, parent...), the financial guarantor must ensure that school fees are paid correctly.

The school cannot be held responsible for delayed or problem with payment.

Reductions

- A reduction in the annual school fee and entry fee is applied for families with more than one child (of the same parentage): the eldest sibling pays full rate, followed by -10% for the second child and then -20% etc..
- A further reduction of 7% is applicable if the full payment of school fees is made **before 02/08/2021**.

ECOLE PRIVEE BILINGUE INTERNATIONALE

Domaine de Massane. 34670. BAILLARGUES

Tél. : (33) 467 707 844 Fax: (33) 467 707 846 Mail: info@epbi.net Web: www.epbi.net

RC B389043423

Payment

By cheque.
By bank transfer.

- include the reason of payment with the first name, last name and class of the child concerned
- ensure the correct payment is made on time.

Payment via SEPA (*mandatory for payment through installments*).

In cash (*Tax when resident in France: up to 1000€ / Tax when resident abroad: up to 15000€*).

→ The amount due is considered unpaid until actual receipt of funds in the school bank account.

Invoicing

The invoices are made in the name of the financial guarantor who signed the school contract (parents, legal guardian). In the event that the payer is a company, (the financial guarantor's employer), the invoice will be issued in the name of the company.

How to pay

When enrolling, parents, who wish to do so, have the possibility of paying the outstanding balance of school fees⁽³⁾ in two, three or eight installments⁽⁴⁾ according to the following conditions:

Balance payment	Admin fee	Deadlines
2 installments	35 € per installment	02/09/2021 – 04/02/2022
3 installments		02/09/2021 – 06/12/2021 04/03/2022
8 installments		02/09/2021 – 04/10/2021 04/11/2021 – 06/12/2021 04/01/2022 – 04/02/2022 04/03/2022 – 04/04/2022

Late enrolment

As the legal withdrawal period is 7 days, the pupil can integrate their class from the 8th day after the school contract signature (subject to validation by the admissions committee. However, this withdrawal period can be reduced upon written request by the financial guarantor.

3 Miscellaneous costs

Options (Study time, booster language classes, Cambridge exam preparation, Chinese classes), books and school supplies must be paid for in advance.

Personal expenses (medical costs, class photo, bank charges generated by foreign bank transfers and cheques etc.) must be paid upon receipt of invoice.

(3) SEPA bank transfer

(4) Except partial school contracts

School year equivalence

2021 - 2022

Year of birth	French	UK	Japan	India	USA	IB
2019 2018	Très Petite Section (TPS) Petite Section (PS)	Nursery	K1	Nursery	Nursery	Nursery
2017	Moyenne Section (MS)	Reception	K2	Lower K	Pre-Kindergarten	
2016	Grande Section (GS)	Year 1	K3	Upper K	Kindergarten	
2015	Cours Préparatoire (CP)	Year 2	Grade 1	Std. 1	1st grade	PYP 1
2014	Cours Élémentaire 1st year (CE 1)	Year 3	Grade 2	Std. 2	2nd grade	PYP 2
2013	Cours Élémentaire 2nd year (CE 2)	Year 4	Grade 3	Std. 3	3rd grade	PYP 3
2012	Cours Moyen 1st year (CM 1)	Year 5	Grade 4	Std. 4	4th grade	PYP 4
2011	Cours Moyen 2nd year (CM 2)	Year 6	Grade 5	Std. 5	5th grade	PYP 5
2010	6 ^{ème}	Year 7	Grade 6	Std. 6	6th grade	MYP 1
2009	5 ^{ème}	Year 8	Grade 1	Std. 7	7th grade	MYP 2
2008	4 ^{ème}	Year 9	Grade 2	Std. 8	8th grade	MYP 3
2007	3 ^{ème}	Year 10	Grade 3	Std. 9	9th grade,	MYP 4
2006	Seconde	Year 11	Grade 1	Std. 10	10th grade	MYP 5
2005	Première	Year 12	Grade 2	Std. 11	11th grade	DP 1
2004	Terminale	Year 13	Grade 3	Std. 12	12th grade	DP 2

ECOLE PRIVEE BILINGUE INTERNATIONALE

Domaine de Massane. 34670. BAILLARGUES

Tél. : (33) 467 707 844 Fax: (33) 467 707 846 Mail: info@epbi.net Web: www.epbi.net

RC B389043423



Canteen Service

How it works



School canteen meals:

The school canteen meals are delivered by caterers every morning and reheated in the school canteen. Weekly menus are available a week in advance; they offer a variety of food types and follow seasonal produce. Dietary needs and healthy food types are privileged.



ORGANIC FOOD: 2 completely organic meals every week (starter, main course, cheese, dessert).

One piece of organic food for every meal on the other two days.

Organic bread for each meal.

VEGETARIAN: 1 vegetarian meal every week.

In case of allergies or specific eating habits, parents are advised to opt for the packed lunch from home option as individualised menus are not possible

Packed lunch from home:

Packed lunches (*Repas Maison*), are left in the morning in the designated lunch box lockers. Packed lunches are cold and are served at lunch time only.

Cost:

Annual fee

(Included in the school contract)

Half board fees for school canteen lunch and packed lunches from home are based on an annual fee within the school contract.

Reimbursements are not made should your child be absent.

Discipline

The school canteen is a place where everyone needs to respect the rules and their behaviour towards others (canteen staff, other pupils) with regards to food, furniture and other supplies

ECOLE PRIVEE BILINGUE INTERNATIONALE

Domaine de Massane. 34670. BAILLARGUES

Tél. : (33) 467 707 844 Fax: (33) 467 707 846 Mail: info@epbi.net Web: www.epbi.net

RC B389043423

CLEEBI

Le Cahier de Liaison Electronique de l'Ecole Bilingue Internationale*.

With CLEEBI, each parent is informed instantly of what is happening at the school.

You will find:

- Various messages: date of a future outing or trip, new timetable for assessment tests, school canteen menu, etc. ... ,
- Important information about the school year: the teaching team, class organisation, book and supply lists, practical information, calendar of planned events...
- Online enrolment

CLEEBI lets the school inform you immediately of any new situation (weather warnings, health and safety protocols etc.), that could affect timetables at the school. New instructions are published here, allowing everyone to get organised according to the new procedure.

It is important to subscribe to www.cleebi.online as soon as you enroll.

In order to receive messages from CLEEBI, just go to www.cleebi.online and click on the subscribe tab: “**S’abonner à CLEEBI** » or



NOTEEBI

Parents Space

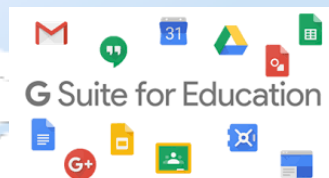
PRONOTE

NOTEEBI allows daily access to different information about your child’s schooling:

- ✓ the school year calendar (dates for class meetings and parent-teacher meetings)
- ✓ grades, all subjects, homework, average grade statistics...
- ✓ end of term reports (grades and teacher comments)
- ✓ online homework diary of work completed and work to do with deadlines
- ✓ absences, late arrivals, observations, punishments and sanctions.

To access these services, simply go to the parent space on Pronote (national education software) at the following address: www.noteebi.fr, then use your parent **ID** and **password** sent to you by the school at the beginning of the school year.

G SUITE FOR EDUCATION



Each pupil, via their own email address@epbi.net, has access to “Classroom”, a virtual class with all lesson documents and resources and access to “Meet” , a videoconference link for every “Classroom”.

**Electronic information website for the school*

ECOLE PRIVEE BILINGUE INTERNATIONALE

Domaine de Massane. 34670. BAILLARGUES

Tél. : (33) 467 707 844 Fax: (33) 467 707 846 Mail: info@epbi.net Web:www.epbi.net

RC B389043423